

LECTOTYPIFICATION OF
BAUHINIA NERVOSA (LEGUMINOSAE: CAESALPINIOIDEAE)

S. Bandyopadhyay

Central National Herbarium
Botanical Survey of India, P.O. Botanic Garden
Howrah – 711103, West Bengal, INDIA
subirbandyopadhyay@yahoo.com

ABSTRACT

A specimen at K has been designated here as the lectotype of *Bauhinia nervosa* (Benth.) Wall. ex Baker.

RESUMEN

Un espécimen depositado en K se designa aquí como lectotipo de *Bauhinia nervosa* (Benth.) Wall. ex Baker.

In the course of my taxonomic studies on the Indian Bauhinias I have sometimes faced a great difficulty in locating a particular specimen cited as type by the author(s). This paper deals with one of such problems encountered by me.

Larsen and Larsen (1984: 35) cited India [Sylhet (type), Assam, Khasya], China (?), Upper Burma' under the distribution of *Bauhinia nervosa* (Benth.) Wall. ex Baker [basionym *Phanera nervosa* Benth.].

Zhang and Zhu (2006) cited 'Type: Bangladesh. Sylhet: Without precise locality, Wallich 5777 (holotype, K!}'. They have, however, neither given a clue in their publication so that one can find out the holotype examined by them at K, nor any specimen at K has been annotated by them accordingly.

In the protologue of *Phanera nervosa*, Bentham (1852: 262) cited '*Bauhinia nervosa*, WALL. Cat. n. 5777. In mont. Sillet' after the morphological description.

The specimen at K-WALLICH bears a piece of paper on the top left hand side on which the name *Bauhinia nervosa* Wall is inscribed and written as: Ching akahoo (?) this was found in the Katchar Hill climber yellow flower stamens reddish like style yellow this flower has good smell this was found in the month of October 1822. Pinned to it there is another strip of paper on which it is inscribed as: 5777 *Bauhinia nervosa* Mont. Sillet LD (?) in an exactly same pattern of handwriting as in Wallichian Catalogue. In another small piece of paper affixed on the top corner of the right hand side there is the name *Bauhinia nervosa* Wall, 5777, Cachar Montes 1823. This specimen is unlikely to have been studied by Bentham because neither any of the morphological characters stated on the sheet has been included in the protologue nor the place of collection has been stated to be Katchar Hill/Cachar Montes and so also the date of collection.

At K (000760781) there is a relevant herbarium sheet bearing the stamp 'HERBARIUM BENTHAMIANUM 1854'. This stamp suggests that the specimen was donated by Bentham in 1854 from his own herbarium to the Kew herbarium when he found that the maintenance of his own herbarium had become too expensive for him (http://en.wikipedia.org/wiki/George_Bentham; <http://www.kew.org/heritage/people/bentham.html>; <http://www.anbg.gov.au/biography/bentham.george.html>) [also see under Bentham's HERBARIUM and TYPES in Stafleu and Cowan, TL2 1:173. 1976]. This sheet has 3 separate leaves (all in detached condition) and an inflorescence. One of the leaves is folded, slightly damaged, and its lobe tips are not evident. The data inscribed on the sheet in pen are as follows: 1) *Bauhinia nervosa*, Sillet Mont, H.I. 5777 (seen on the left bottom of the inflorescence); 2) *Phanera nervosa* Bth, Pl. Jungh. 1. 262 (seen on the left bottom of the folded leaf); and 3) almost in the middle of the sheet, it has an inscription in pencil as follows: 5777, *B nervosa*, Sillet Mont, cad Assam Griff in [illegible] (not associated with any of the 4 specimens). One of the remaining two leaves is on the top left and the other is at the bottom left. The left top leaf lobes are distinctly acute, whereas the left bottom leaf lobes are acutish.

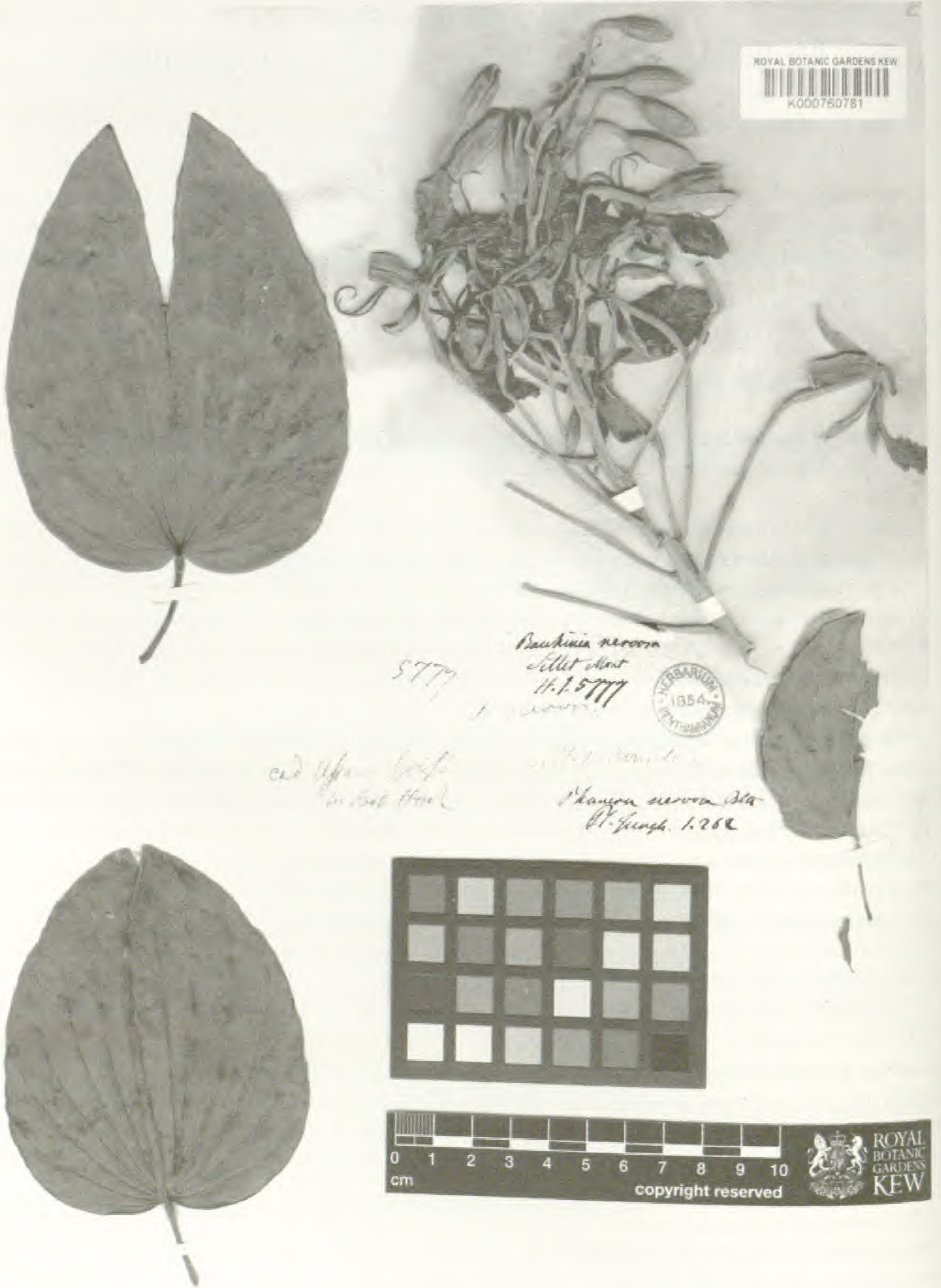


FIG. 1. Photograph of the lectotype of *Bauhinia nervosa* (Benth.) Wall. ex Baker at K. [Reproduced with kind permission of the Director and the Board of Trustees, Royal Botanic Gardens, Kew.]

Within the protologue, the “leaflets” (an error for leaf lobes) were described therein as ‘acutiusculis v(el). obtusis’. In contrast to Bentham’s description, Baker (1878: 283) described the leaf lobes as “sometimes sub-acute.” Furthermore, the scandent habit that has been stated in the protologue must have been taken from some other source because the specimen neither has any tendril nor there is any such inscription on the sheet.

As no other collection of “Wall. Cat. num. list no. 5777” used by Bentham could be located, I am lectotypifying here the name with the aforementioned Kew specimen (000760781), which was originally part of ‘HERBARIUM BENTHAMIANUM.’

Bauhinia nervosa (Benth.) Wall. ex Baker in J.D. Hooker, Fl. Brit. India 2:283. 1878. TYPE: same as of basionym *Phanera nervosa* Benth.

Phanera nervosa Benth. in Miquel, Pl. Jungh. 262. 1852. TYPE: Herbarium Benthamianum 1854, Sillet Mont, N. Wallich 5777 (LECTOTYPE, designated here: K 000760781, image! (Fig. 1); ISOLECTOTYPES: BM 000958839, image!, CALI, K-W, image!).

Any specimen at K having the locality spelled as ‘Sylhet’ could not be located but it may be so that Zhang and Zhu (2006) cited the same specimen studied by me and changed the spelling of ‘Sillet’ to ‘Sylhet’ following the current usage. Although Art. 9.8 of the ICBN (McNeill et al. 2006) allows “The use of a term defined in the Code (Art. 9.1-9.7) as denoting a type, in a sense other than that in which it is so defined, is treated as an error to be corrected (for example, the use of the term lectotype to denote what is in fact a neotype),” Zhang and Zhu’s (2006) citation ‘holotype, K!’ cannot be construed as an inadvertent lectotypification, even if the same specimen has been studied by us i.e. D.-X. Zhang and G.-H. Zhu and myself. This is because, Art. 7.11 of the ICBN (McNeill et al. 2006) requires that on or after 1 January 2001, the typification statement must include the phrase “designated here” (hic designatus) or an equivalent, which is not the case in Zhang and Zhu’s (2006) type citation.

ACKNOWLEDGMENTS

I am thankful to the Director, Botanical Survey of India and Additional Director, Central National Herbarium, BSI for their help, to the Director, Royal Botanic Gardens, Kew for providing literature and cibachrome photograph of the Kew specimen, V.P. Prasad, IBLO, RBG, Kew for sending the image of the specimens at K-W and BM, K.N. Gandhi for refining the manuscript and to Dave Boufford and Emily W. Wood, Harvard University, USA for their comments.

REFERENCES

- BAKER, J.G. 1878. *Bauhinia*. In: J.D. Hooker, Flora of British India 2(5):275–285. L. Reeve & Co., London.
- BENTHAM, G. 1852. Leguminosae. In: F.A.W. Miquel, ed. Plantae Junghuhnianae. Leiden. Pp. 205–269.
- LARSEN, K. AND S.S. LARSEN. 1984. *Bauhinia*. In: T. Smitinand and K. Larsen, eds. Flora of Thailand 4(1):4–45. The Forest Herbarium, Royal Forest Department, Bangkok.
- MCNEILL, J., F.R. BARRIE, H.M. BURDET, V. DEMOULIN, D.L. HAWKSWORTH, K. MARHOLD, D.H. NICOLSON, J. PRADO, P.C. SILVA, J.E. SKOG, J.H. WIERSEMA, AND N.J. TURLAND (EDS.). 2006. International code of botanical nomenclature (Vienna Code). Adopted by the Seventeenth International Botanical Congress Vienna, Austria, July 2005. A.R.G. Gantner Verlag, Ruggell, Liechtenstein. [Regnum Veg. 146].
- ZHANG, D.-X. AND G.-H. ZHU. 2006. The identity of *Bauhinia claviflora* and of *B. dioscoreifolia* (Leguminosae). Acta Phytotax. Sin. 44:651–653.